



Inner West Community Committee

Armley, Bramley & Stanningley, Kirkstall

Meeting to be held in Stanningley Amateur Rugby Football Club, Coal Hill Drive, Leeds, LS13 1PA
Wednesday, 10th December, 2014 at 5.00 pm

Councillors:

A Lowe

Armley;

J McKenna

Armley;

A Smart

Armley;

C Gruen

Bramley and Stanningley;

T Hanley

Bramley and Stanningley;

K Ritchie

Bramley and Stanningley;

J Illingworth

Kirkstall;

F Venner

Kirkstall;

L Yeadon

Kirkstall;

Co-optees

Marvina Babs-Apata

Bramley & Stanningley Ward

Hazel Boutle

Armley Ward

Eric Bowes

Armley Ward

Annabel Gaskin

Bramley & Stanningley Ward

Stephen McBarron

Bramley & Stanningley Ward

Sam Meadley

Kirkstall Ward

Erica Mitchell

Kirkstall Ward





Agenda compiled by: Debbie Oldham 0113 395 1712
Governance Services Unit, Civic Hall, LEEDS LS1 1UR
West North West Area Leader: Shaid Mahmood Tel: 395 1652

*Images on cover from left to right:
Armley - Armley Mills; Armley Library (old entrance)
Bramley & Stanningley - war memorial; Bramley Baths
Kirkstall – Kirkstall Leisure Centre; deli market at Kirkstall Abbey*

A G E N D A

Item No	Ward/Equal Opportunities	Item Not Open		Page No
1			<p>COMMUNITY COMMITTEE WORKSHOP - PARKS AND GREENSPACES</p> <p>Councillor Caroline Gruen, Chair of the Inner West Community Committee will introduce the topic for discussion. The topic will look at the importance of greenspace across the area and in particular looking at volunteering, play and the concept of a Kirkstall Valley Park. The Committee will look at all parks and greenspaces across the Inner West, including land not owned by Leeds City Council such as British Canals and Waterways land and areas managed by Armley Common Rights Trust.</p> <p>The findings of the workshop will inform and support the future work of the Community Committee and enable the Committee to monitor future progress.</p> <p>At the conclusion of the workshop session, at approximately 6.00pm, the meeting will take a short break.</p> <p>At 6:15pm, the meeting will then move onto the formal Council business on the agenda.</p> <p>6:15PM - FORMAL COUNCIL BUSINESS</p> <p>APPEALS AGAINST REFUSAL OF INSPECTION OF DOCUMENTS</p> <p>To consider any appeals in accordance with Procedure Rule 15.2 of the Access to Information Procedure Rules (in the event of an Appeal the press and public will be excluded).</p> <p>(*In accordance with Procedure Rule 15.2, written notice of an appeal must be received by the Chief Democratic Services Officer at least 24 hours before the meeting.)</p>	1 - 8

Item No	Ward/Equal Opportunities	Item Not Open		Page No
2			<p>EXEMPT INFORMATION - POSSIBLE EXCLUSION OF THE PRESS AND PUBLIC</p> <p>1 To highlight reports or appendices which officers have identified as containing exempt information within the meaning of Section 100I of the Local Government Act 1972, and where officers consider that the public interest in maintaining the exemption outweighs the public interest in disclosing the information, for the reasons outlined in the report.</p> <p>2 To consider whether or not to accept the officers recommendation in respect of the above information.</p> <p>3 If the recommendation is accepted, to formally pass the following resolution:-</p> <p>RESOLVED – That, in accordance with Regulation 4 of The Local Authorities (Executive Arrangements) (Meetings and Access to Information) (England) Regulations 2012 or Section 100A(4) of the Local Government Act 1972 as appropriate, the public be excluded from the meeting during consideration of those parts of the agenda designated as containing exempt information on the grounds that it is likely, in view of the nature of the business to be transacted or the nature of the proceedings, that if members of the press and public were present there would be disclosure to them of exempt information, as follows:-‘</p> <p>LATE ITEMS</p> <p>To identify items which have been admitted to the agenda by the Chair for consideration.</p> <p>(The special circumstances shall be specified in the minutes.)</p>	
3				

Item No	Ward/Equal Opportunities	Item Not Open		Page No
4			DECLARATIONS OF DISCLOSABLE PECUNIARY INTERESTS To disclose or draw attention to any disclosable pecuniary interests for the purposes of Section 31 of the Localism Act 2011 and paragraphs 13-16 of the Members' Code of Conduct.	
5			APOLOGIES FOR ABSENCE To receive any apologies for absence.	
6			OPEN FORUM / COMMUNITY FORUMS In accordance with Paragraphs 4.16 and 4.17 of the Community Committee Procedure Rules, at the discretion of the Chair a period of up to 10 minutes may be allocated at each ordinary meeting for members of the public to make representations or to ask questions on matters within the terms of reference of the Community Committee. This period of time may be extended at the discretion of the Chair. No member of the public shall speak for more than three minutes in the Open Forum, except by permission of the Chair.	
7			MINUTES OF THE PREVIOUS MEETING - 8TH OCTOBER 2014 To confirm as a correct record the minutes of the previous meeting held on 8 th October 2014.	9 - 14
8			MATTERS ARISING To note any matters arising from the minutes of the previous meeting.	15 - 16

Item No	Ward/Equal Opportunities	Item Not Open		Page No
9	Armley; Bramley and Stanningley; Kirkstall		PARKS AND COUNTRYSIDE ANNUAL REPORT The report of the Chief Officer Parks and Countryside provides an area profile of key assets and services provided in the West Inner area. It details capital improvements in community parks, sport pitches and fixed play in the area for the last 12 months and planned improvements to be delivered in the next 12 months	17 - 28
10	Armley; Bramley and Stanningley; Kirkstall		COMMUNITY COMMITTEE UPDATE REPORT To receive the report of the West North West Area Leader the report updates the Community Committee on the work of the three sub groups of the Committee: General Purposes, Children and Young People and Environment. The report also provides an update to the Committee on new pieces of work and partnership working that has taken place in the area since the last meeting.	29 - 32
11			VENUE AND MAP STANNINGLEY AMATEUR RUGBY FOOTBALL CLUB, COAL HILL DRIVE, LEEDS, LS13 1PA	33 - 34

Item No	Ward/Equal Opportunities	Item Not Open		Page No
			<p>THIRD PARTY RECORDING PROTOCOL</p> <p>Third Party Recording</p> <p>Recording of this meeting is allowed to enable those not present to see or hear the proceedings either as they take place (or later) and to enable the reporting of those proceedings. A copy of the recording protocol is available from the contacts named on the front of this agenda.</p> <p>Use of Recordings by Third Parties – code of practice</p> <p>a) Any published recording should be accompanied by a statement of when and where the recording was made, the context of the discussion that took place, and a clear identification of the main speakers and their role or title.</p> <p>b) Those making recordings must not edit the recording in a way that could lead to misinterpretation or misrepresentation of the proceedings or comments made by attendees. In particular there should be no internal editing of published extracts; recordings may start at any point and end at any point but the material between those points must be complete.</p>	

This page is intentionally left blank



**Community
Committee**



December Community Committee

Armley, Bramley & Stanningley, Kirkstall

Parks & Greenspaces Discussion Report

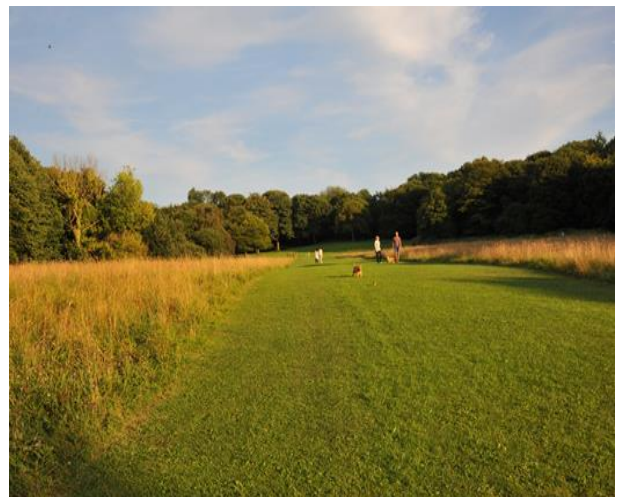


Parks & Greenspaces



Kirkstall Abbey is one of the City's 'Major Parks' and has Green Flag Status. There are also 6 community parks: Armley Park, Gotts Park, Bramley Park, Bramley Falls Wood, Stanningley Park, Rodley Park, Burley Park and Ley Lane. A further 28 playing pitches, 8 bowling greens, 10 play areas, 5 multi use games areas and 1 skateboard park are also managed by the City Council.

Leeds City Council managed parks are measured against the Leeds Quality Parks Standard which includes the following indicators: A welcoming place; healthy, safe and secure; clean and well maintained; sustainability; conservation/ heritage; community involvement and marketing. Currently Armley, Bramley, Rodley and Burley Parks meet this standard.



Play

Improving play opportunities in Inner West Leeds is vital if we want to improve the lives of children and young people. Children and young people tell us that more places to go and more things to do is very important for them. Play is so important because opportunities for good, free play help children and young people to thrive – helping them to be happier, healthier, safer and to develop new skills, new confidence and new friendships. Above all, play allows children to enjoy life. (Leeds Play Strategy)



Play includes fixed play such as playgrounds and skateboard parks but also imaginative adventure play using all greenspaces in our communities and the natural environment around them. Creating playful spaces encourages wider use of greenspaces.



What are your thoughts on the play opportunities available across the Inner West? What are the current barriers to children and young people playing and how can we overcome these? Have you heard of play rangers?

Kirkstall Valley Park

The concept for a park in the Kirkstall Valley that links together a variety of green and public spaces is one that has been in development for a number of years by local Councillors and organisations.



Just over a mile outside the City Centre there are over a hundred hectares of recreational open space which is accessible to the communities that surround it, stretching from Armley Mills to Kirkstall Abbey and beyond.

The space is a mix of parks, woods, grassland, waterways and agricultural land which provides opportunities for walking, cycling, canoeing, fishing, birdwatching and a range of outdoor activities in a largely traffic free environment.



Proposals focus on better linkages between the spaces and better usage of existing buildings and facilities such as St Ann's Mill. One of the initial phases of this project will be securing funds for a footbridge across the River Aire from land to the rear of Morrisons to the Nature Reserve. A feasibility study for this has already been completed.

How do you think best use can be made of these areas of land? Where might funding be sought for elements of the scheme? Is there anything you would like to see being created in these spaces?

Volunteering

There is a wide range of volunteering opportunities in greenspaces across the area. Volunteering provides a range of practical experience working outdoors and can be in the form of one off events or regular sessions that are affiliated to particular parks – such as through ‘Friends Of’ groups or particular locations such as through In Bloom groups.



Volunteers carry out a wide variety of work for Leeds City Councils Parks including practical work, fundraising for site improvements, organising community events and being the ‘eyes and ears’ of an area. For example, recently a group of local parents have worked with the Council to look at making improvements to Ley Lane green space in Armley. There are also a number of volunteer groups in Kirkstall working on the creation and development of community gardens.



Is there community interest for any new volunteering groups? Are there areas of land that would benefit from some volunteer hours?



This page is intentionally left blank

Community Committee Area

Inner West



Legend

-  Electoral Wards
 Inner West CC Area

This page is intentionally left blank

INNER WEST COMMUNITY COMMITTEE

WEDNESDAY, 8TH OCTOBER, 2014

PRESENT: Councillor C Gruen in the Chair

Councillors T Hanley, J Illingworth,
J McKenna, K Ritchie, A Smart and
L Yeadon

Co-optees H Boutle, E Bowes, A Gaskin, S
McBarron, E Mitchell

16 APPEALS AGAINST REFUSAL OF INSPECTION OF DOCUMENTS

There were no appeals against refusal of inspection of documents.

17 EXEMPT INFORMATION - POSSIBLE EXCLUSION OF THE PRESS AND PUBLIC

There were no exempt items.

18 LATE ITEMS

There were late items. However, supplementary information had been circulated with the agenda.

19 DECLARATIONS OF DISCLOSABLE PECUNIARY INTERESTS

No declarations of disclosable pecuniary interests were made.

20 APOLOGIES FOR ABSENCE

Apologies for absence were received from Cllr Venner and Cllr Lowe.

21 OPEN FORUM / COMMUNITY FORUMS

In accordance with paragraphs 4.16 and 4.17 of the Community Committee Procedure Rules, at the discretion of the Chair a period of up to 10 minutes may be allocated at each ordinary meeting for members of the public to make representations or to ask questions on matters within the terms of reference of the Community Committee. This period may be extended at the discretion of the Chair. No member of the public shall speak for more than three minutes in the Open Forum, except by permission of the Chair.

On this occasion, none of the members of public in attendance chose to speak.

22 MINUTES OF THE PREVIOUS MEETING

The minutes of the meeting held on 16th July 2014 were approved as a correct record.

23 MATTERS ARISING FROM THE MINUTES

Minute no. 10 Community Committee Appointments and Advisory Groups

The Committee were informed of the membership of the Children and Young People Advisory Group:

Cllr. Smart
Cllr. Gruen
Cllr. Illingworth
Hazel Boutle
Annabel Gaskin
Kirkstall Co-optee to be confirmed

The Committee were informed of the membership of the Environment Advisory Group:

Cllr. Ritchie
Cllr. Smart
Cllr. Yeadon
Eric Bowes
Stephen McBarron

Minute no. 11 Appointment of Co-optees

Members of the Committee were asked to agree the Kirkstall Co-optees:

Erica Mitchell
Sam Meadley – not present at the meeting

Members were also asked to agree a further co-optee to the Committee who would have a specific interest in the Children and Young People Advisory Group:

Marvina Babs-Apata – not present at the meeting

RESOLVED- That the Community Committee approved the nominations of Erica Mitchell, Sam Meadley and Marvina Babs-Apata to be Co-optees of the Inner West Community Committee for the remainder of the municipal year.

24 INFORMAL WORKSHOP SESSION - RE- ENGAGING AND MANAGING THE INFLUENCE OF CHILDREN AND YOUNG PEOPLE

The Chair of the Community Committee welcomed all in attendance at the meeting.

The Chair introduced the report which launched the 'engaging and increasing the influence of children and young people' Community Committee topic to investigate how to improve engagement with children and young people in the area and make their voices heard at community committee level.

The Chair handed over to Cllr. Smart who introduced herself as the Chair for the Children and Young People Advisory Group.

The meeting heard from a variety of youth work groups and young people from within the Inner West area:

- Voices of influence Team the team offer advice and support on engaging with a wide range of young people and also carry out a variety of city wide projects such as Leeds Youth Parliament.
- BARCA Voice and Influence Group - a group of young people had written and produced a video on community safety issues which affect their everyday lives in Inner West Leeds.
- Girls Group from Kirkstall spoke at the workshop on issues which affected their lives in relation to school, health, and safety. The girls also informed the workshop of the type of activities they would like to access within the Inner West area including First Aid courses.
- A member of the Armley Music Group informed the workshop of the issues affecting him and his peers on the Wythers estate. The group had built a model of 'Utopia' – an ideal environment that they would like to live in. It identified community spaces and facilities for use by children and young people of the area.

Local councillors and co-opted members joined young people, stakeholders, partners and members of the public to discuss how the committee should engage with young people.

The workshop discussed:

- Issues affecting young people in the Inner West
- How young people would like to be communicated with, including social media and face to face.
- Ideas for future activities and events

RESOLVED- That the findings of the workshop be compiled to produce a strategy for increasing engagement with young people to support the work programme of the Community Committee.

25 WELLBEING UPDATE REPORT

The report of the West North West Area Leader provided Members with an update on the budget position for the Wellbeing Fund 2014/15 which has been revised for the new Community Committee boundary. The report outlined the current balance of the small grants and skips budgets including those small grants and skips that had been approved since the last meeting.

The Committee were informed that the unallocated wellbeing budget for each ward was as follows:

- Armley Ward £28,965
- Bramley and Stanningley Ward £9,811
- Kirkstall Ward £0

The Committee noted that Kirkstall Ward had committed all of its revenue funding to projects prior to the creation of the new Inner West Community Committee in June 2014.

Kirkstall Ward Members were informed that £2,500 had been moved into the small grants pot and was available for Small Grants and skips.

A Ward Member for Armley provided the Committee with an update on the current position regarding the future of Gotts Park Golf Club which will remain open and it was noted that the Golf Club would be seeking support from the Community Committee in the coming months.

A request was made to the Area Support Team to check at what point capital monies would be refunded to Armley if a planning application on the old Liberal Club site at New Wortley was approved.

The Committee were informed that discussion had taken place at General Purposes Advisory Group on how to progress with the remaining monies in the Youth Activities Fund. The proposal was that projects which had been successful during summer be approached to run continuation projects. Members requested feedback from projects that have already taken place prior to making any decisions.

The Committee agreed that they would support 'Take Over Day'.

Members were informed of a discussion that had taken place at General Purposes meeting about whether the Wellbeing budget should be split on a ward basis or used for the Committee as a whole.

Members were in agreement of a shared budget whilst retaining some monies for discreet ward pots.

Members discussed applications for funding for activities at Ley Lane and the geographical coverage of the After Work Project at Hollybush Conservation Centre that had been running since the Spring.

RESOLVED - That the Committee:

1. Noted the current budget position for the Wellbeing Fund for 2014/15
2. Noted the current position of the Small Grants and skips budget and those small grants and skips that had been approved since the last meeting.
3. Approved the application for funding for activities at Ley Lane for £3,000
4. Noted the current position of the Youth Activity Fund and projects funded through a delegated decision and decided how to progress with the remaining monies
5. Decided to progress with Wellbeing commissioning for 2014/15.
6. Area Support agreed to set up a meeting with Armley Ward Members and the Armley Cluster to discuss funding of Youth activities within the area.

26 COMMUNITY COMMITTEE UPDATE REPORT

The report of the West North West Area Leader updated the Community Committee on the work of the three advisory groups of the Committee: General Purposes, Children and Young People and Environment.

The Chair of each of the advisory groups gave a brief summary of the issues discussed at the meetings which formed part of the submitted report.

General Purposes Advisory Group

- Neighbourhood improvement work

Children and Young People Advisory Group

- Establishment of a Youth Partnership Board for the area

Environment Advisory Group

- Locality Environment Team
- Parks and Countryside

Member's attention was drawn to page 36 of the submitted report which highlighted increased complaints regarding street drinkers on Armley Town Street.

Members were informed that a piece of work is underway with Barca to assess whether these individuals are receiving any support and if not are being signposted to services and support structures.

The Committee will be updated on the progress of the work at future meetings.

RESOLVED - That the Community Committee noted the report including the key outcomes from the advisory groups.

27 NOTIFICATION OF ELECTION OF COMMUNITY COMMITTEE CHAIR FOR 2014/15

The report of the City Solicitor formally notified Members of the appointment of Councillor C Gruen to the position of Inner West Community Committee Chair for the duration of the 2014/2015 municipal year, which was made by Council at its Annual Meeting on 9th June 2014.

RESOLVED – The Community Committee noted that Councillor C Gruen was elected as Chair of the Inner West Community Committee for the duration of the 2014/2014 municipal year by Council at its Annual Meeting on 9th June 2014.

28 Any Other Business

A resident representative of the Leeds Housing Advisory Panel attended the meeting. The representative informed the Committee of works that had been undertaken within the Inner West area.

The Chair thanked Annabel Gaskin – Co-optee for Bramley and Stanningley for some preparatory work that she had undertaken as part of the 'Engaging and increasing the influence of children and young people workshop session. The work will be passed to the Children and Young People Advisory Group.

29 Date and time of next meeting

The next meeting will be held on 10th December 2014 at 5pm. Venue to be confirmed.

Matters Arising from Meeting: 16th July 2014

Minute No.	Action to be taken	By whom	Outcome
25 - Wellbeing	To ascertain when Armley Ward would receive back capital funding from the demolition and sale of the old New Wortley Liberal Club.	Area Support Team	The council is currently in the process of applying for outline planning permission for development of this site. If approved, the site will be marketed for sale. The process could take around six months (if planning is approved) and Armley Ward will be due a refund of £29,500 capital funds which was spent on demolition once the sale has gone through.
25 - Wellbeing	Look at match funding for Youth Activities Fund from Clusters.	Area Support Team	A review of the Youth Activities Fund is currently underway by the Children and Young Peoples Scrutiny Board. This will include analysis of various funding arrangements city wide. Following the conclusion of the enquiry further work will be carried out in Inner West to look at match funding opportunities.

This page is intentionally left blank



Report of: Chief Officer Parks and Countryside

Report to: Inner West Community Committee

Report author: Chris Simpson (3957400)

Date: 10/12/14 **To note**

Parks and Countryside Report Update

Purpose of report

1. This report provides an area profile of key assets and services provided in the West Inner area.
2. It details capital improvements in community parks, sport pitches and fixed play in the area for the last 12 months and planned improvements to be delivered in the next 12 months

Main issues

Area Profile of the Service

3. The following table summarises community green space assets managed by Parks and Countryside in the West Inner Area:

Asset	Quantity
Community parks	8
City Parks	1
Playing Pitches:	
Cricket	
Football	18
Rugby League	6
Rugby Union	4
Bowling greens	8
Playgrounds	10
Multi-use games areas	5
Skate parks	1

4. The community parks in the West Inner area are as follows:

- Burley Park
- Armley Park
- Bramley Falls Wood Park
- Bramley Park
- Gotts Park
- Rodley Park
- Stanningley Park
- Ley Lane – Mistress Lane

5. The City Park in the West Inner Area is:

- Kirkstall Abbey

Community Parks – Leeds Quality Park Status

6. The Parks and Green Space Strategy approved at Executive Board in February 2009 sets out the vision and priorities to 2020. One of the key proposals contained in the strategy is the aspiration for all community parks to meet the Green Flag standard for field based assessment by 2020. The Green Flag Award Scheme represents the national standard for parks and green spaces. It has been developed around eight key criteria as follows;

- **A welcoming place** - how to create a sense that people are positively welcomed in the park
- **Healthy, safe & secure** - how best to ensure that the park is a safe & healthy environment for all users
- **Clean & well maintained** - what people can expect in terms of cleanliness, facilities & maintenance
- **Sustainability** - how a park can be managed in environmentally sensitive ways
- **Conservation & heritage** - the value of conservation & care of historical heritage
- **Community involvement** - ways of encouraging community participation and acknowledging the community's role in a park's success
- **Marketing** - methods of promoting a park successfully
- **Management** - how to reflect all of the above in a coherent & accessible management plan or strategy and ensure it is implemented.

Kirkstall Abbey currently has the Green Flag award and was originally chosen to be put forward for the award as it is a City Park. Pudsey Park is the only Community Park in the city which has a Green Flag status and this was chosen because, at the time, there were no 'City' or 'Country' parks in the West wedge. To forward a community park in the inner West area for Green Flag status would require the

development of a suitable management plan, which is a considerable undertaking, typically taking around 6 months to complete. The resource requirement equates to approximately 1 X SO2 officer (£17,000).

Leeds has developed an assessment method for community parks based on the Green Flag criteria known as the Leeds Quality Park (LQP) standard. The following table provides a provisional profile of these assessments for the Inner West Area.

An appendix is attached which shows the LQP Award Score Sheet used by the judges when assessing sites. The criteria used are the same for LQP as is for the field based Green Flag award.

Site	Year Assessed	Welcoming Place	Healthy, Safe, Secure	Clean, Well Maintained	Sustainability	Conservation / Heritage	Community Involvement	Marketing	Meets Standard?
Armley Park	2014								Yes
Bramley Falls Wood Park	2014								No
Bramley Park	2014								Yes
Gotts Park	2014								No
Rodley Park	2014								Yes
Stanningley Park	2014								No
Burley Park	2014								Yes
Ley Lane	2014								No

Key:

Meets Leeds Quality Park Standard on average for this key criteria	
Below Leeds Quality Park Standard on average for this key criteria	

7. Capital Improvements to community parks that are planned to take place during 2014/15 are as follows:
 - Burley Park – Community orchard planted
 - Dunkirk Hill – tree works, paths, fencing works and visitor interpretation
 - Armley and Gotts Park – tree works, paths and visitor interpretation
 - Bramley War Memorial – completed and opened
 - Rodley Park – Drainage improvements, paths, picnic benches, wildflower meadow, improved planting schemes, removal of disused bowling green infrastructure.
8. Improvements proposed to take place in 2015/16 are:
 - Armley Park – further improvements in Armley Park to include relocating of skatepark, the installation of a small MUGA and further tree works.

- Stanningley Park – proposed consultation to establish improvement priorities

9. In 2014/15 a site based gardener was funded by Community Committee Wellbeing fund and this provided for one person:

The site based Gardener was in post from April to Sept 2014 working a four day, 29.6 hour week for 6 months of the year, across three sites in the Inner West Area (Rodley Park - 11.84 hours, Bramley Falls Wood – 11.84 hours and Stanningley Park – 5.92 hours).

The gardener undertook general gardening duties including: grass cutting, pruning, de-littering, emptying of litter bins, removing fly tipping, inspection of play equipment, maintenance of park infrastructure, planting and sweeping paths.

This project has helped to improve the physical environment and security issues at the above sites. The site-based gardener was available to engage with the public to enhance visitor experience at the sites

Recommendations

10. That the Inner West Community Committee note the contents of this report.

Site Name	Category Name	Ward No	Pitch use (football/rugby)	Number of pitches
Kirkstall Abbey	City Park	22	2 rugby union 1 senior football	3
Armley Park	Community Park	4	2 senior football	2
Bramley Falls Wood Park	Community Park	6	3 senior football, 2 junior football	5
Bramley Park	Community Park	6	3 senior football, 1 rugby union	4
Burley Park	Community Park	22		
Gotts Park	Community Park	4		
Ley Lane	Community Park	4		
Rodley Park Recreation Ground	Community Park	6		
Stanningley Park	Community Park	6	4 senior football , 1 rugby league	5
Back Lane	Local Green Space	4		
Bell Lane	Local Green Space	6		
Broad Lane Recreation Ground	Local Green Space	6		
Broadlea Place POS	Local Green Space	6		
Burley Village Green	Local Green Space	22		
Calverley Lane Picnic Site	Local Green Space	6		
Cross Bath Road	Local Green Space	6		
Dunkirk Hill	Local Green Space	4		
Elder Road	Local Green Space	4		
Fairfield Hill	Local Green Space	6		
Foxcroft Way	Local Green Space	22		
Greenhow Road	Local Green Space	22		
Hall Lane Recreation Ground	Local Green Space	4		
Horton Close POS	Local Green Space	6		
Houghley Gill - Houghley Lane	Local Green Space	4		
Kings Estate	Local Green Space	4		
Latchmere Gardens	Local Green Space	22		
Newley Meadow & Picnic Site	Local Green Space	6		
Oak Road POS	Local Green Space	4		
Old Farm Close	Local Green Space	22		
Percy Street Recreation Ground	Local Green Space	4		
Pog Farm POS	Local Green Space	6		
Railsfield Rise	Local Green Space	6		
Raynville Crescent POS	Local Green Space	4		
Ring Road West Park(POS)	Local Green Space	22		
Rising Sun POS	Local Green Space	22		
Sandford Road	Local Green Space	22		

Sandford Woods POS	Local Green Space	6		
St. Mary's POS	Local Green Space	4		
Stanningley Road	Local Green Space	4		
Vesper Road	Local Green Space	22		
Archie Gordon Complex	Recreation Grounds	4	artificial rugby pitch	1
Butcher Hill Playing Fields	Recreation Grounds	22	senior football	2
Coal Hill Lane Rugby Pitches	Recreation Grounds	6	rugby league	3
Cragside Recreation Ground	Recreation Grounds	22	removed	
Elida Gibbs Recreation Ground	Recreation Grounds	22	senior football	1
Moorfield Recreation Ground	Recreation Grounds	4	removed	
Queenswood Drive	Recreation Grounds	22	rugby league	1
Redshaw Road Rec	Recreation Grounds	4	rugby league	1

Playground Name	Greenspace typology	Playground Status	Ward Name
Bramley Park	Community Park	Ball Park Area	Bramley & Stanningley
Burley Park Ball Park Area	Community Park	Ball Park Area	Kirkstall
Oak Road MUGA	Local Green Space	Ball Park Area	Armley
Rodley Park Ball Area	Community Park	Ball Park Area	Bramley & Stanningley
Stanningley Park Ball Area	Community Park	Ball Park Area	Bramley & Stanningley
Armley Park Playground	Community Park	Playground	Armley
Bramley Falls	Community Park	Playground	Bramley & Stanningley
Bramley Park	Community Park	Playground	Bramley & Stanningley
Burley Park	Community Park	Playground	Kirkstall
Cragside Recreation Ground	Recreation Grounds	Playground	Kirkstall
Kirkstall Abbey	City Park	Playground	Kirkstall
Rodley Rec	Community Park	Playground	Bramley & Stanningley
Sandford Road	Local Green Space	Playground	Kirkstall
Stanningley Park	Community Park	Playground	Bramley & Stanningley
Wolseley Road	Local Green Space	Playground	Kirkstall
Armley Park	Community Park	Skateboard Park	Armley

This page is intentionally left blank

LQP Award Score Sheet



0 1	2 3 4	5 6	7	8	9	10
Very Poor	Poor	Fair	Good	Very Good	Excellent	Exceptional

Name of green space: _____

Judge(s): _____

Date of field assessment: _____

Method

- Please score each category out of 10
- In order to pass, the green space must achieve a score of 48 or more on the field assessment

Feedback

- Please ensure that you include comments against each category in the feedback sections. These should be detailed enough to provide constructive information to site managers.

Final Score

Field assessment score (70) – 48 or more to achieve LQP	
LQP Awarded? Yes/No	

Field Research

To what degree does the park/green space meet the following criteria in practice?
Mark each out of 10

A Welcoming Place	Score	Conservation and Heritage	Score
1 Welcoming		19 Conservation of natural features, wild fauna and flora	
2 Good and Safe Access		20 Conservation of landscape features	
3 Signage		21 Conservation of buildings & structures	
4 Equal Access for all			
Healthy, Safe and Secure		Community Involvement	
5 Safe equipment and facilities		22 Community involvement in management & development including outreach work	
6 Personal security in park		23 Appropriate provision for the community	
7 Dog fouling			
8 Appropriate provision of facilities		Marketing	
9 Quality of facilities		24 Marketing and promotion	
		25 Provision of appropriate information	
Clean and Well Maintained		26 Provision of appropriate education interpretation/provision	
10 Litter and waste management			
11 Grounds maintenance and horticulture		Management	
12 Building & infrastructure maintenance		27 Implementation of the Management Plan	
13 Equipment maintenance			
Sustainability		Total Score	0
14 Environmental sustainability- energy & natural resource conservation, pollution			
15 Pesticides		Please enter no of n/a criteria	
16 Peat use		Average (Total divided by 27-no n/a criteria)	0
17 Waste Minimiation			
18 Arboculture and woodland management		Out of 70 (Average x 7)	0

Field Assessment – Feedback

Please use this table to record the strengths and recommendations for each category. Additional comments should be recorded at the foot of the page.

Assessment Criteria	Strengths	Recommendations
A welcoming place		
Healthy, safe and secure		
Clean and well maintained		
Sustainability		
Conservation and heritage		
Community involvement		
Marketing		
Management		
Additional comments		

This page is intentionally left blank



Report of: The West North West Area Leader (Citizens and Communities)

Report to: to Inner West Community Committee (Armley, Bramley & Stanningley and Kirkstall)

Report author: Sarah Geary (3367872)

Date: 10th December 2014

To note

Community Committee Update Report

Purpose of report

1. This report updates the Community Committee on the work of the three sub groups of the Committee: General Purposes, Children and Young People and Environment.
2. This report updates the Committee on new pieces of work and partnership working that has taken place in the area since the last meeting.

Main issues

3. General Purpose Sub Group

The Inner West General Purposes Sub Group was held on 10th November at Elland Road Police Station and included a tour of the site and custody suite prior to the meeting. Key issues that were discussed are:

Domestic Violence

A discussion was had on domestic violence issues across the Inner West with Armley Ward having the 3rd highest level of reported incidents across the City, Bramley & Stanningley Wards being 7th highest and Kirkstall 13th. Work that is taking place in the area is a mixture of preventative work and responsive, with each case being different. Members were keen that the Community Committee should have domestic violence as one of its themes at a future meeting and asked how they can support work to tackle the

levels of domestic violence in the area. A request was also made for training for Members on practical things they can do and look out for whilst they are engaging with residents in their areas.

Town & District Centre Committee Topic

A paper was circulated on the July Community Committee theme of Town & District Centres. The paper surmises the challenges, opportunities and drivers in the three centres of Armley, Bramley and Kirkstall. It also includes summaries of the discussions had at the workshop tables at the meeting. Members were supportive of the more user friendly format of the report. A discussion was had on how best the Committee could be kept updated on actions that were agreed for each topic.

Communications & Media

Kim Regan, Senior Communications Officer, presented the meeting with information on the corporate branding that is being used for Community Committees including the Citizens@ brand. A discussion was also had on social media and how that can be best used to engage with local people. The Inner West Facebook page has around 100 'likes' which is a good start but more can be done. Posts are made regularly advertising community events and information.

4. Children & Young People Sub Group

The Children and Young People sub group met on 23rd October and the following issues were discussed:

Preventing Child Sexual Exploitation

Members asked service providers for an overview of work to identify and target potential victims.

A co-ordinated approach is being taken in the inner West involving the police, youth work providers and clusters.

Engaging Children & Young People

It was agreed that a new approach would be taken to establish a Children and Young People's Board for the inner West supported by local youth work providers.

Summary of geographically targeted youth work

Representatives from Barca and the Youth Service outlined their delivery and reported on how they had changed the focus of some sessions following feedback from the last sub group meeting.

5. Environment Sub Group

The Inner West Environment Sub Group met on 27th November and discussed the following:

Dog fouling

It was agreed that a 'Dog Watch' pilot will be launched in the new year to recruit dog walkers to report crime and anti-social behaviour.

Leeds Neighbourhood Approach

Officers updated the committee on the project to tackle poor quality rented accommodation on the Edinburghs in Armley. In six months 83 inspections have been carried out with 46 re-inspections and 33 legal notices have been served where landlords have not co-operated on improvements required. The team are also inspecting the flats above the shops on Town Street where 50 properties were visited resulting in 15 legal notices served.

Locality Team Update

The new zonal teams will be operational from 1st January which will provide a more flexible, localised service. The team have also responded to complaints regarding the former Burley Sports Bar with a legal notice served on the owners to remove fly tipping and secure the premises.

6. Armley Helping Hands Winter Warmer Launch

Armley Helping Hands launched their Community Committee sponsored winter warmth campaign on Thursday 30th October at an event at their base in Strawberry Lane Community Centre. Dozens of older people were treated to a light lunch and given a free 'Winter Warmer Pack' which included thermal socks, a thermometer, a fleece blanket and flask among other items aimed at helping older people stay warm over the winter. A range of agencies also attended the event to provide advice on energy saving, staying safe in the home and crime prevention.

Bramley Elderly Action have also been provided with packs by the Community Committee which they will distribute to vulnerable older people through their 'keep in touch' winter visits.

7. Armley Christmas Lights Switch On

The popular Christmas light switch on event this year was held on Saturday 29th November. Armley Town Street was closed and the crowd was entertained by a variety of acts on stage including local young people.

8. Bramley Christmas Lights Switch On

Bramley Christmas lights switch on event was on Friday 28th November at Bramley Shopping Centre. The event included entertainment from local schools as well as other acts and a santas grotto and was well supported by the local community.

9. Armley Lazer Centre

A working group Chaired by Cllr McKenna has been meeting since the summer looking at future plans for the Lazer Centre. The facility is run by Leeds City Council's Youth Service and provides a range of facilities including a climbing tower, off road motor biking, multi-use games area and a camp site. This year the funding provided to the centre has been significantly reduced and from April 2015 there will be no funding from Leeds City Council. This provides a significant challenge to raise the additional income

required to keep the site open. A number of options are being investigated including daytime usage of some of the classroom and office space for organisations to rent, improved marketing of the site including looking at what has worked well at other similar facilities and reducing the costs of running the site.

Key to this work is the desire to keep the facility open to local young people to experience outdoor facilities close to the inner City.

Corporate

- a. **Consultation and engagement** - Local priorities were set through the Area Business Plan process.
- b. **Equality and diversity / cohesion and integration** - The Business Planning process takes into account equality, diversity, cohesion and integration issues.
- c. **Council policies and city priorities** - The themes in the Business Plan mirror the themes and priority outcomes at a city wide level and also reflect the delegated functions and priority advisory functions.
- d. **Resources and value for money** – There are no resource or value for money considerations in this report.
- e. **Legal implications, access to information and call in** - There are no legal implications as a result of this report, and there are no key or major decisions being made that would be eligible for Call In.
- f. **Risk management** – Risk management is carried out on a project by project basis. There are no risk implications in this report.

Conclusion

- 10. The work of the sub groups will be essential in the delivery of the Community Committee priorities. The Area Support Team continues to look at opportunities to develop projects and promote new ways of working to achieve the objectives outlined in the Business Plan.

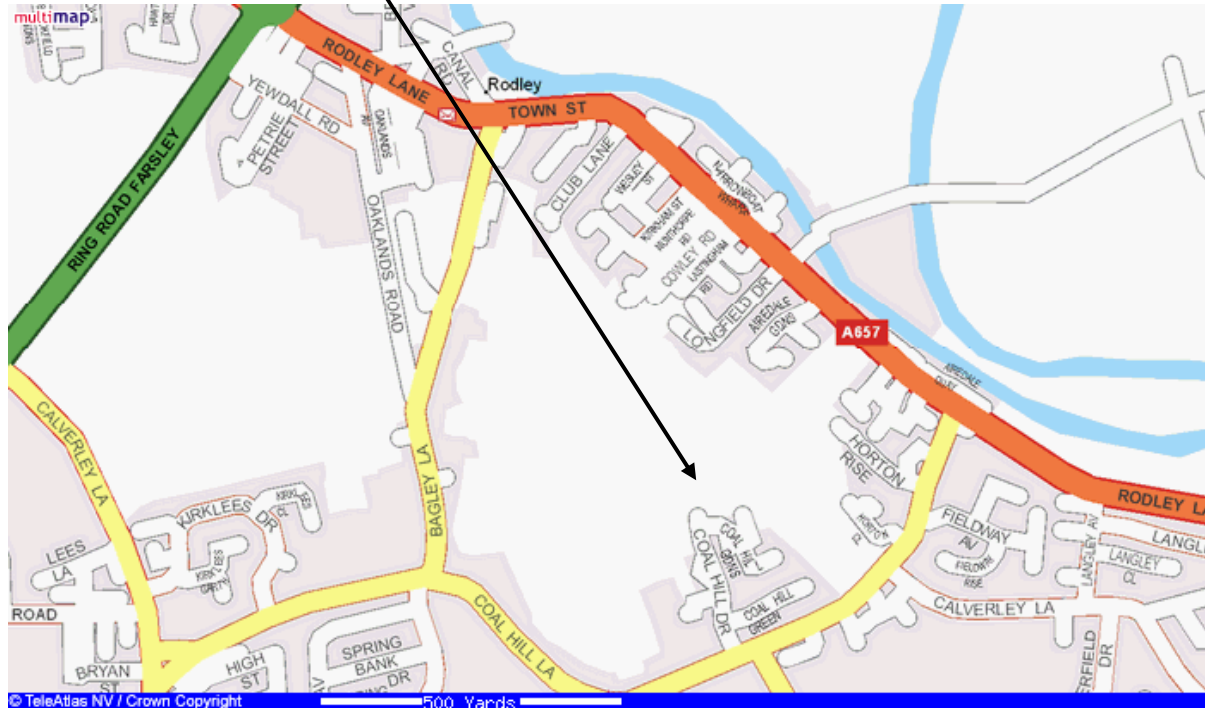
Recommendations

- 11. To note the report including the key outcomes from the sub groups.

Background information

- None

Stanningley Amateur Rugby Football Club, Coal Hill Drive, Leeds, LS13 1PA



This page is intentionally left blank